

INSTRUCTIONS FOR APPLICATION OF DRYSEAL TAPE



1 Sweep and make sure the hatch covers are clean, dry and dust free. In addition, use paint thinner with a rag to wipe off any loose grain, paint flakes, oil, salt or dust from hatch seams, then wipe dry.

2 During cold, wet weather, it is highly recommended to heat the hatches using propane and a torch.



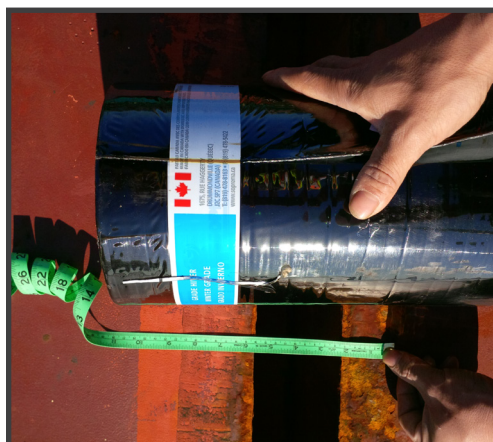
3 Unroll, peel back release sheet, align, press and step down hard on DrySeal hatch tape is fully adhered to the surface. Cut into required lengths if required.

4 Finished DrySeal product now ready for voyage.

CHOOSING THE CORRECT DRYSEAL SIZE FOR YOUR HATCH COVER



Note size on side of box - 100mm, 150mm, 300mm



Wide gap - use 12" 300mm DrySeal Tape



1" gap - use 6" 150mm or 4" 100mm DrySeal Tape